



Thursday, November 4, 2021

8:15 AM – 8:30 AM Welcome, Introductions & Instructions for Claiming CE Credit

8:30 AM– 9:30 AM Your Grief Questions Answered



Jamey Boudreaux, MSW, M.DIV
LMHPCO Executive Director



Nancy Dunn, RN, MS, CT
LMHPCO Education Director

Each year the Bereavement Seminar attendees offer up suggested topics for the future. This year’s seminar will begin with an interactive session of four areas identified from the 2020 survey. Attendees will participate in learning about complicated grief, rituals and memorials, support groups and helping others open up to talk about their feelings. This session will assist your agency’s bereavement program with ideas and resources.

9:30 AM – 9:45 AM Break

9:45 AM – 10:45 AM Learning Virtual Ways to Connect & Developing a Virtual Children’s Grief Camp



Chris Raff, MS, Master of Finance
Director Virtual Care, LCMC Health



Laura Hellums, BSW, MA
IPU Social Worker and Bereavement Coordinator, Sanctuary Hospice

Looking to enhance your bereavement program through the use of technology? This presentation will provide an overview of virtual care along with education and insight of how to use Zoom technology to enhance your bereavement services. The second half of the presentation will explore past children’s grief activities used and how this has been adapted to fit a virtual/online format. Information and resources will be provided on activities used to help support grieving children and families.

10:45 AM – 11:00 AM Break

11:00 AM – 12:00 PMAll You Ever Wanted to Know About Cremation and Survivor Benefits but Were Afraid to Ask



Butch Benedict, Mortuary Science
Forrest County MS Coroner, Funeral Director Pinehaven Funeral Home



Billy Henry, BBA, Ed., Mortuary Science
Executive Funeral Director, Lakelawn Metairie Funeral Home & Cemeteries

Do you know the guidelines in your state regarding cremation? Join our experts from MS and LA as they discuss important topics such as specific cremation guidelines, viewing protocols, and time frames. This session will also provide valuable information about documents required by funeral homes, death certificates and funeral planning. What happens when there have been no funeral plans made and no money is available for a funeral? This session is sure to provide a wealth of information to help you as you assist your patients and families.

12:00 PM – 12:45 PM Lunch

12:45 PM – 1:45 PM Matters of Black Grief



Tashel C. Bordere, PhD, CT
*Assistant Professor, Human Development & Family Science
State Extension Specialist, Youth Development
University of Missouri*

This session will address Black youth and family bereavement with attention to deaths-by-inequities, common patterns, and within group differences in bereavement and coping. Drawing

from research, social justice theories, and exemplars highlighted in the media, this session will illustrate the shared and non-shared environments of Black bereaved communities and populations of racial, economic, and socio-political power differences. With a focus on clinical implications, the session will also explore cultural resources and strategies employed as coping mechanisms (e.g., spirituality, social action) instituted in resistance to policies and practices aimed at the denial of Black community bereavement and systemic efforts to produce suffocated grief within this population. Specific recommendations for clinical practice and programming will be reviewed.

1:45 PM – 2:00 PM Break

2:00 PM – 3:00 PM Heal the Healers: Taking Care of Self



Rodney W. Overstreet, BSN, MNA, CH
Heal Our Healers Founder
Certified Registered Nurse Anesthetist, UAB Med West

This educational and inspirational session will assist hospice and bereavement professionals in acquiring language to describe their feelings and experiences. Various resources will be discussed to assist the individual in moving from their present state to their desired state. Attendees will practice two of these strategies together to close out the experience.

3:00 PM Wrap Up



TARGET AUDIENCE

Bereavement Coordinators, Nurses, Social Workers, Chaplains, Volunteer Managers/ Coordinators, Administrators, Community Liaisons, Palliative Care Providers and all health care providers dedicated to providing and improving bereavement services

AMERICANS WITH DISABILITIES ACT

If you need special assistance or accommodations identified in the ADA, please contact LMHPCO office in advance at 888-546-1500.

PHOTOGRAPHY

LMHPCO will be taking photos via Zoom throughout the seminar. Registration implies consent to be photographed and permission for LMHPCO to use the photos in its printed materials.



CONFERENCE OBJECTIVES

- Identify resources for providing bereavement services
- Identify resources for utilizing technology in your bereavement program
- Identify cultural considerations within your bereavement program
- Identify resources for self-care

CONTINUING EDUCATION

To receive continuing education credit, the person must be a duly registered attendee of the seminar AND complete an electronic evaluation for each session attended. Certificates will be available online to attendees requesting continuing education who register for the session, remain in attendance throughout the session and complete an on-line evaluation form. Attendees should claim credit commensurate with the extent of their participation in the activity.

— Social Worker Continuing Education Credit —

This organization, LMHPCO, DP # SWB 13003, is approved as a provider for continuing education by the Mississippi Board of Examiners for Social Workers. Approval period: 5/1/2023. Social Workers will receive up to 5.0 continuing education clock hours (to include 1.0 Cultural Diversity, 4 General) in participating in this course.

This seminar has been approved for up to 5.0 General hours of continuing education credit by the National Association of Social Workers- Louisiana Chapter as authorized by the Louisiana State Board of Social Work Examiners.

— Nursing Continuing Education Credit —

Up to 5.0 hours Nursing Continuing Education approved through Louisiana- Mississippi Hospice and Palliative Care Organization, an approved provider of nursing continuing education by the Louisiana State Board of Nursing. CE Provider number 46.

— Chaplaincy Education —

A certificate will be awarded for each contact hour the chaplain is in attendance up to 5.0 hours.

— Bereavement/Volunteer Coordinators —

A certificate will be awarded for each contact hour the coordinator is in attendance up to 5.0 hours.



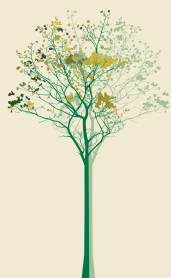
2021 VIRTUAL BEREAVEMENT FACILITATOR SEMINAR REGISTRATION

- Member: \$89**

- Non-Member: \$179**

Online registration may be accessed at
<https://lmhpc.memberclicks.net/2021bsm>

QUESTIONS ABOUT REGISTRATION CAN BE DIRECTED TO NANCY DUNN AT 888-546-1500, EXT. 1



REGISTRATION/CANCELLATION POLICY INFORMATION:

All cancellations must be submitted in writing.
A \$25 processing fee will apply to **ALL** cancellations.
Cancellations made by **October 31, 2021** will receive a 50% refund.

No refunds will be made in registration cancellations postmarked/internet time-stamped after October 31, 2021.

Substitutions are welcomed. Please submit your request in writing. Substitutions apply to this seminar only and not to future educational events. All refunds will be processed within 30 days after the 2021 Bereavement Facilitator Seminar.