



Thursday, October 29, 2020

8:00 AM – 8:15 AM Welcome & Instructions

8:15 AM – 9:45 AM The Diversity of Grief in Louisiana and Mississippi



Jamey Boudreaux, MSW, M.DIV
LMHPCO Executive Director



Eunice Benson, MN, FNP-C
*Hospice and Palliative Care Nurse Practitioner,
Southeast LA Veterans Health Care System*



Bryan Johnson, BSBA-M
*Bereavement Coordinator,
Heart of Hospice-Acadiana*



Marquetta Trice, LPN, LBSW, MHP, MBA, Certified Life Coach
*Director,
Magnolia Regional Health Center Home Health & Hospice*



Kiruba Vembu, MD
*Palliative Medicine Fellow,
Tulane University*

Grief is as diverse as is our population in Louisiana and Mississippi. Having an appreciation of that diversity will enhance not only the bereavement experience of the grieving family we serve but for the hospice professionals attending to the bereavement needs of those families.

9:45 AM – 10:00 AM Break

10:00 AM – 11:00 AMDeath, Dying and Grief with Veterans



Malaika D. Amedee, LCSW
*Palliative Care Coordinator,
Southeast LA Veterans Health Care System*



Ada Marion, LCSW
*Palliative Care & Hospice SW,
Southeast LA Veterans Health Care System*

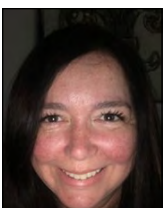


Kenneth M. Thomas, Jr., M.A. M, DIV
*Chaplain,
Forrest General Hospital Hospice*

This Veteran centric session will focus on the use of ceremony as a way of grieving for Veterans families. Resources regarding burial services offered to Veterans families will be provided. The presenters will discuss how death and dying may look different among Veterans and how to best address the needs of the Veterans and their families at death.

11:00 AM – 11:15 AM Break

11:15 AM – 12:15 PM Grief and Children – How do we support the family?



Bridget Perry, CCLS
*NICU /CICU Certified Child Life Specialist,
Children's Hospital of New Orleans*

The death of someone close to a child has a profound and lifelong effect on a child (Schonfield, Demaria, 2020). Misinformation and misconceptions can impair a child's adjustment to loss (Schonfield, Demaria, 2020). Approximately 1 in 20 children in the US experience the death of a parent or sibling by the age of 16(Schonfield, Demaria, 2020). Despite the high prevalence of bereavement among children, many professionals are uncomfortable supporting children who are grieving. There is a lack of supportive services to help children develop adequate coping skills to deal with grief(Schonfield, Demaria, 2020). It is important for professionals working with grieving families to understand how children grieve, where they are in development, what impacts coping, how to support siblings, how to have difficult conversations with children and memory making opportunities.

12:15 PM – 1:00 PM Lunch

1:00 PM – 2:00 PMGrief Communications in a COVID World



Nancy Dunn, RN, MS, CT
LMHPCO Education Director



Barbara King
*Professional Relations Liaison and Diversity Office,
Center for Hospice Care*



Dana Muhlfelder, MD
*Attending ER Physician,
Ochsner Medical Center;
Hospice & Palliative Medicine Fellow, Tulane University*

Has COVID-19 impacted Anticipatory grief for your patients and their families? Are you serving disenfranchised families? Does your staff need to take better care of self? Join us for this panel presentation of how our communications relating to grief have been impacted by COVID-19 and what can be done to assist hospice providers as they care not only for patients and families but take care of self as well.

2:00 PM – 2:15 PM Break

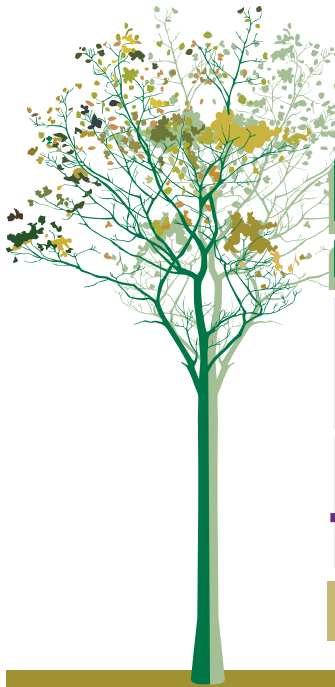
2:15 PM – 3:15 PM ... Creating and Managing Virtual Grief Support Groups Amid COVID-19



Pamela Gabbay, EdD, FT
*Co-Founder,
The Satori Group*

In the last six months, the way that we conduct bereavement support groups has changed drastically. Due to COVID-19 and the need to be physically distanced, many organizations have turned to digital platforms like Zoom or WebEx to conduct grief support groups. This presentation will help you to create and run virtual grief groups in your organization. Instructions about the logistics of online groups will be included, as well as practical tips for facilitating virtual groups. This presentation will also include group norms and group dynamics that are important to consider in a virtual format.

3:15 PM..... Virtual Memorial Service



LOUISIANA~MISSISSIPPI
HOSPICE AND PALLIATIVE CARE ORGANIZATION

2020 VIRTUAL Bereavement Facilitator SEMINAR

CONFERENCE OBJECTIVES

- Identify ways to provide bereavement support to diverse cultures and groups within your service area
- Identify resources for working with bereaved children
- Identify resources for grief support in a COVID world

TARGET AUDIENCE

Bereavement Coordinators, Nurses, Social Workers, Chaplains, Volunteer Managers/Coordinators, Administrators, Community Liaisons, Palliative Care Providers and all health care providers dedicated to providing and improving end of life care

AMERICANS WITH DISABILITIES ACT

If you need special assistance or accommodations identified in the ADA, please contact LMHPCO office in advance at 888-546-1500.

PHOTOGRAPHY

LMHPCO will be taking photos via Zoom throughout the seminar. Registration implies consent to be photographed and permission for LMHPCO to use the photos in its printed materials.

CONTINUING EDUCATION

To receive continuing education credit, the person must be a duly registered attendee of the seminar AND complete an electronic evaluation for each session attended. Certificates will be available online to attendees requesting continuing education who register for the session, remain in attendance throughout the session and complete an on-line evaluation form. Attendees should claim credit commensurate with the extent of their participation in the activity.

— Social Worker Continuing Education Credit —

This organization, LMHPCO, DP # SWB 13003, is approved as a provider for continuing education by the Mississippi Board of Examiners for Social Workers. Approval period: 5/1/2021. Social Workers will receive up to 5.5 continuing education clock hours (to include 1.5 Cultural Diversity, 4 General) in participating in this course.

This program was approved for 5.5 General contact hour(s) of continuing education credit by the National Association of Social Workers—Louisiana Chapter as authorized by the Louisiana State Board of Social Work Examiners.

— Nursing Continuing Education Credit —

Up to 5.5 hours Nursing Continuing Education approved through Louisiana-Mississippi Hospice and Palliative Care Organization, an approved provider of nursing continuing education by the Louisiana State Board of Nursing. CE Provider number 46.

— Chaplaincy Education —

A certificate will be awarded for each contact hour the chaplain is in attendance up to 5.5 hours.

— Bereavement/Volunteer Coordinators —

A certificate will be awarded for each contact hour the coordinator is in attendance up to 5.5 hours.

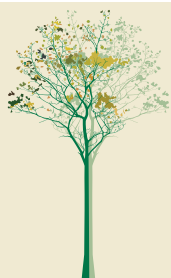


2020 VIRTUAL BEREAVEMENT FACILITATOR SEMINAR REGISTRATION

- Member Early Bird \$89**
(October 1 - 16, 2020)
- Member Regular Rate \$109**
(October 17 - 29, 2020)
- Non-Member Early Bird \$179**
(October 1 - 16, 2020)
- Non-member Regular Rate \$219**
(October 17 - 29, 2020)

[Click here for On Line Registration](#)

QUESTIONS ABOUT REGISTRATION CAN BE DIRECTED TO NANCY DUNN AT 888-546-1500, EXT. 1



REGISTRATION/CANCELLATION POLICY INFORMATION:

All cancellations must be submitted in writing.

A \$25 processing fee will apply to ALL cancellations.

Cancellations made on or before **October 16, 2020** will receive a full refund, less a processing fee.

Cancellations between **October 17, 2020 and October 23, 2020** will receive a 50% refund.

No refunds will be made in registration cancellations internet time-stamped after October 23, 2020.

Substitutions are welcomed. Please submit your request in writing. Substitutions apply to this seminar only and not to future educational events. All refunds will be processed within 30 days after the 2020 Bereavement Facilitator Seminar.